

This product includes mapping data licensed from Ordnance Survey with the permission of the Controller of Her Majesty's Stationery Office. Copyright LBN 2013. All rights reserved. License number: 100019199.

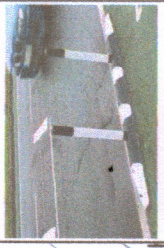
NOTES:  
Key:

Proposed double yellow lines with loading restrictions  
Existing double yellow lines

Proposed Beresford Bollard with yellow reflective strip



Proposed Wand Orca and Pole cone  
To be placed 300mm away from kerb.  
Wand Orca specifications:  
• 2.5m long  
• 175mm wide  
• 80mm high  
• colour - black and white  
Pole cone specifications:  
• 80mm high  
• 80mm diameter  
• colour - black with white TSRGD banding



NEW ROAD LAYOUT AHEAD

Proposed sign to be placed on existing sign post

NO	DESCRIPTION	DATE	BY

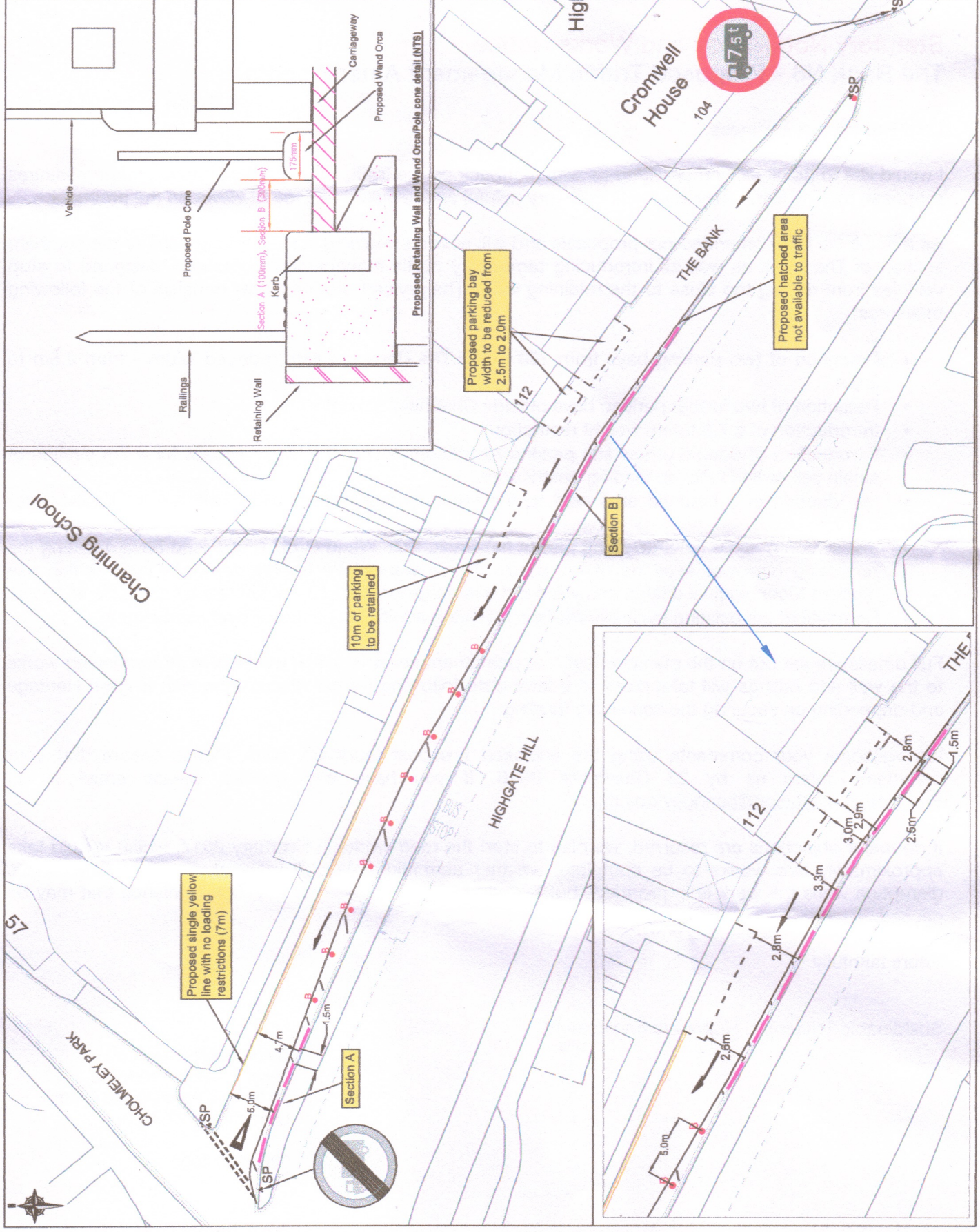
The Bank N6

Proposed Parking Amendments

MD MD MD  
NTS NTS Nov 2016

SS-HI-10205-F B  
PLACE & SUSTAINABILITY  
SINGLE FRONTLINE

Haringey LONDON



Proposed single yellow line with no loading restrictions (7m)

10m of parking to be retained

Proposed parking bay width to be reduced from 2.5m to 2.0m

Proposed hatched area not available to traffic

